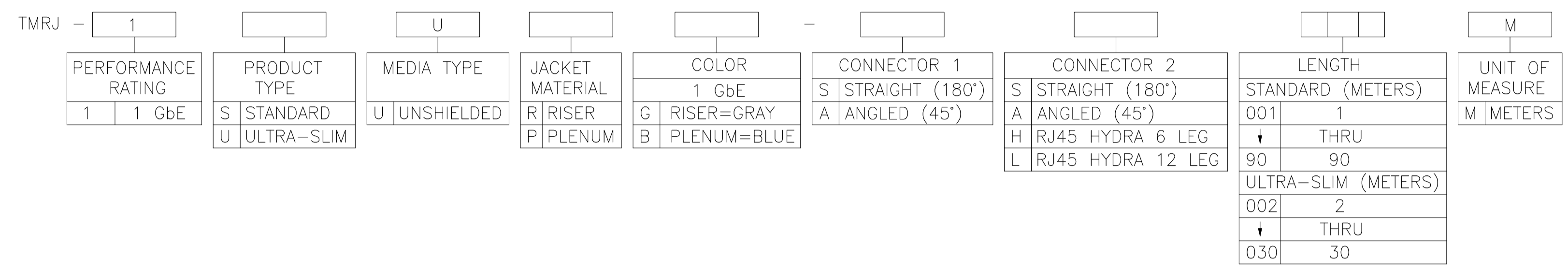


ENTERPRISE NETWORKS MRJ21 CABLE ASSEMBLY CATALOG SCHEME



- CABLE ASSEMBLY 100% TESTED FOR:
 - OPENS AND SHORTS [300 VDC HIPOT]
 - WIRING DIAGRAM
 - TRANSMISSION PERFORMANCE

△ PRODUCT LABEL INFORMATION AS FOLLOWS;

TE CONNECTIVITY
 (CATALOG NUMBER) (MCV SYMBOL)
 ___M/___FT (LISTING MARK)
 (DATE CODE) / (LOCATION CODE)
 (SERIAL NUMBER) MADE IN___

IF NO CATALOG NUMBER, USE PART NUMBER.

- SEE TABLE FOR CABLE LENGTH.
- SEE DETAIL V FOR MRJ21 (1GbE) CONNECTOR WIRING DIAGRAM.
- SEE DETAIL V FOR RJ45 HYDRA BREAKOUT INFORMATION AND LABELING.

6. BASIC CONNECTOR DIMENSIONS FOUND ON VIEW B, SHEET 3.

- △ STANDARD TRUNK, AVAILABLE LENGTHS: 1-40 (1M INCREMENTS), 40-95 (5M INCREMENTS).
- △ ULTRA SLIM, AVAILABLE LENGTHS: 2-30 (1M INCREMENTS).
- △ HYDRA, AVAILABLE LENGTHS: 1-20 (1M INCREMENTS), 20-45 (5M INCREMENTS) AND 50-90 (10M INCREMENTS).

3-XXXXXXX-3	33	±0.300	-	-	-	-	±0.500	-	-
3-XXXXXXX-2	32		6-XXXXXXX-5	65	-	-		-	-
3-XXXXXXX-1	31		-	-	-	-		-	-
3-XXXXXXX-0	30	±0.200	-	-	-	-	±0.500	-	-
2-XXXXXXX-9	29		6-XXXXXXX-0	60	-	-		-	-
2-XXXXXXX-8	28		-	-	-	-		-	-
2-XXXXXXX-7	27		-	-	-	-		-	-
2-XXXXXXX-6	26		-	-	-	-		9-XXXXXXX-0	90
2-XXXXXXX-5	25		-	-	-	-		-	-
2-XXXXXXX-4	24	±0.100	-	-	-	-	±1.000	-	-
2-XXXXXXX-3	23		5-XXXXXXX-5	55	-	-		-	-
2-XXXXXXX-2	22		-	-	-	-		-	-
2-XXXXXXX-1	21		-	-	-	-		-	-
2-XXXXXXX-0	20		-	-	-	-		-	-
1-XXXXXXX-9	19		-	-	-	-		8-XXXXXXX-5	85
1-XXXXXXX-8	18		-	-	-	-		-	-
1-XXXXXXX-7	17		5-XXXXXXX-0	50	-	-		-	-
1-XXXXXXX-6	16		-	-	-	-		-	-
1-XXXXXXX-5	15		-	-	-	-		-	-
1-XXXXXXX-4	14	±0.075	-	-	-	-	±0.400	8-XXXXXXX-0	80
1-XXXXXXX-3	13		4-XXXXXXX-5	45	-	-		-	-
1-XXXXXXX-2	12		-	-	-	-		-	-
1-XXXXXXX-1	11		-	-	-	-		-	-
1-XXXXXXX-0	10		-	-	-	-		7-XXXXXXX-5	75
XXXXXXX-9	9		-	-	-	-		-	-
XXXXXXX-8	8		-	-	-	-		-	-
XXXXXXX-7	7		4-XXXXXXX-0	40	-	-		-	-
XXXXXXX-6	6		3-XXXXXXX-9	39	-	-		-	-
XXXXXXX-5	5		3-XXXXXXX-8	38	-	-		-	-
XXXXXXX-4	4	3-XXXXXXX-7	37	-	-	7-XXXXXXX-0	70		
XXXXXXX-3	3	3-XXXXXXX-6	36	-	-	-	-		
XXXXXXX-2	2	3-XXXXXXX-5	35	-	-	-	-		
XXXXXXX-1	1	±0.040	3-XXXXXXX-4	34	±0.300	-	-		

△	.510	VIEW E	-	2111499
△	.510	VIEW E	-	2111498
△	.510	VIEW H	TMRJ-1SURG-AL___M	2111377
△	.510	VIEW F	TMRJ-1SURG-AH___M	2111376
△	.460	VIEW E	TMRJ-1SUPB-SH___M	2111375
△	.510	VIEW G	TMRJ-1SURG-SL___M	2111373
△	.460	VIEW B	TMRJ-1SUPB-SA___M	2111372
△	.510	VIEW B	TMRJ-1SURG-SA___M	2111371
△	.510	VIEW E	TMRJ-1SURG-SH___M	2111370
△	.510	VIEW C	TMRJ-1SURG-AA___M	2111369
△	.460	VIEW A	TMRJ-1SUPB-SS___M	2111368
△	.360	VIEW A	TMRJ-1UURG-SS___M	2111367
△	.510	VIEW A	TMRJ-1SURG-SS___M	2111366
	CABLE DIA REF	DRAWING VIEW/DETAIL LOCATION	ENTERPRISE NETWORKS CATALOG NO.	PART NO.

PART NO.	ASSEMBLY L±METERS	PART NO.	ASSEMBLY L±METERS	PART NO.	ASSEMBLY L±METERS
CABLE LENGTH △					

THIS DRAWING IS A CONTROLLED DOCUMENT. DIMENSIONING AND TOLERANCING PER ASME Y14.5M (ISO STANDARDS). TOLERANCES UNLESS OTHERWISE SPECIFIED:

DIMENSIONS: mm [INCHES]	0. PLC ± .01	1. PLC ± .01	2. PLC ± .01	3. PLC ± .01	4. PLC ± .01	ANGLES ± .01
-------------------------	--------------	--------------	--------------	--------------	--------------	--------------

MATERIAL: - FINISH: - WEIGHT: - SCALE: A1 00779 ©=2111439

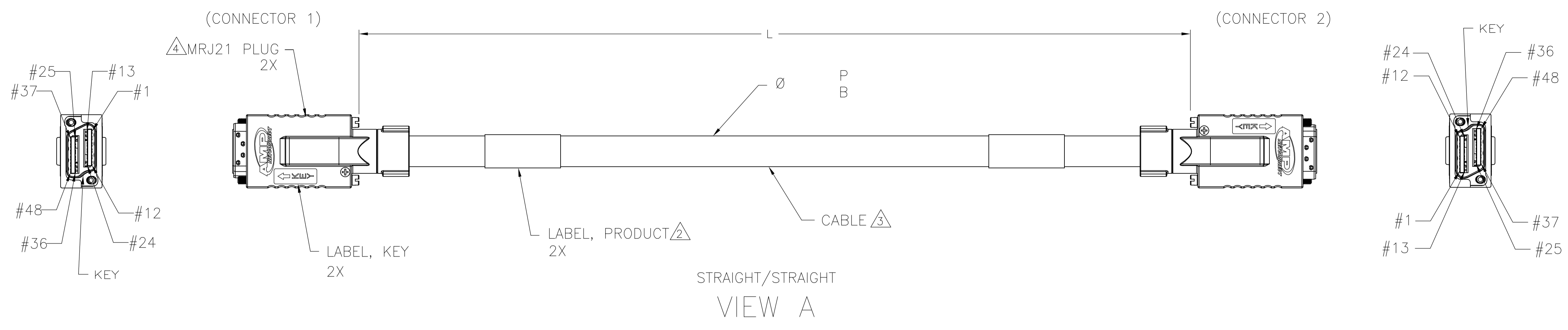
CUSTOMER DRAWING SCALE: NTS SHEET 1 OF 5 REV: C

APPROVED: S. JONES DATE: 06FEB2012

TE Connectivity

CABLE ASSEMBLY, MRJ21, 1GbE, ENTERPRISE NETWORKS

408-10469

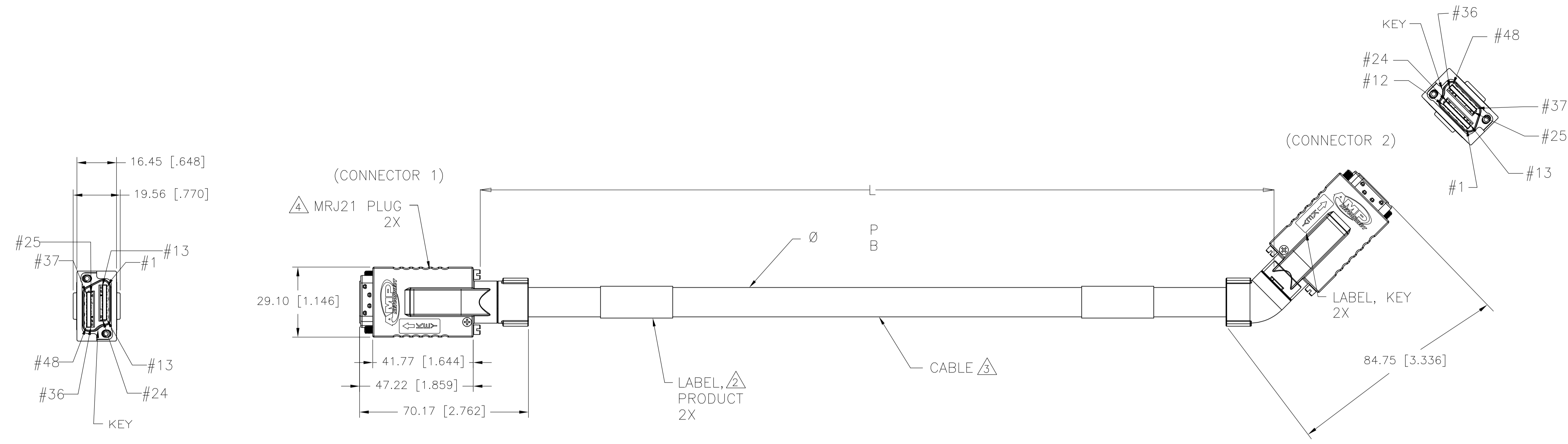


CONNECTOR 1		CABLE		CONNECTOR 2			
MRJ21 PIN #	1GbE (25 PR) WIRE COLOR	MRJ21 PIN #	RJ45 HYDRA 6 LEG PIN #	RJ45 HYDRA 12 LEG LABEL	RJ45 HYDRA 12 LEG PIN #	RJ45 HYDRA 12 LEG LABEL	
1	WHT/BLU	1	5		1		PORT 1
2	BLU/WHT	2	4		2		
13	WHT/ORG	13	3		3		
14	ORG/WHT	14	6		6		PORT 2
3	WHT/GRN	3	1		1		
4	GRN/WHT	4	2		2		
15	WHT/BRN	15	7		3		PORT 3
16	BRN/WHT	16	8		6		
25	WHT/GRY	25	5		1		
26	GRY/WHT	26	4		2		PORT 4
37	RED/BLU	37	3		3		
38	BLU/RED	38	6		6		
27	RED/ORG	27	1		1		PORT 5
28	ORG/RED	28	2		2		
39	RED/GRN	39	7		3		
40	GRN/RED	40	8		6		PORT 6
5	RED/BRN	5	5		1		
6	BRN/RED	6	4		2		
17	RED/GRY	17	3		3		PORT 7
18	GRY/RED	18	6		6		
7	BLK/BLU	7	1		1		
8	BLU/BLK	8	2		2		PORT 8
19	BLK/ORG	19	7		3		
20	ORG/BLK	20	8		6		
29	BLK/GRN	29	5		1		PORT 9
30	GRN/BLK	30	4		2		
41	BLK/BRN	41	3		3		
42	BRN/BLK	42	6		6		PORT 10
31	GLK/GRY	31	1		1		
32	GRY/BLK	32	2		2		
43	YEL/BLU	43	7		3		PORT 11
44	BLU/YEL	44	8		6		
9	YEL/ORG	9	5		1		
10	ORG/YEL	10	4		2		PORT 12
21	YEL/GRN	21	3		3		
22	GRN/YEL	22	6		6		
11	YEL/BRN	11	1		1		PORT 1
12	BRN/YEL	12	2		2		
23	YEL/GRY	23	7		3		
24	GRY/YEL	24	8		6		PORT 2
33	VIO/BLU	33	5		1		
34	BLU/VIO	34	4		2		
45	VIO/ORG	45	3		3		PORT 3
46	ORG/VIO	46	6		6		
35	VIO/GRN	35	1		1		
36	GRN/VIO	36	2		2		PORT 4
47	VIO/BRN	47	7		3		
48	BRN/VIO	48	8		6		

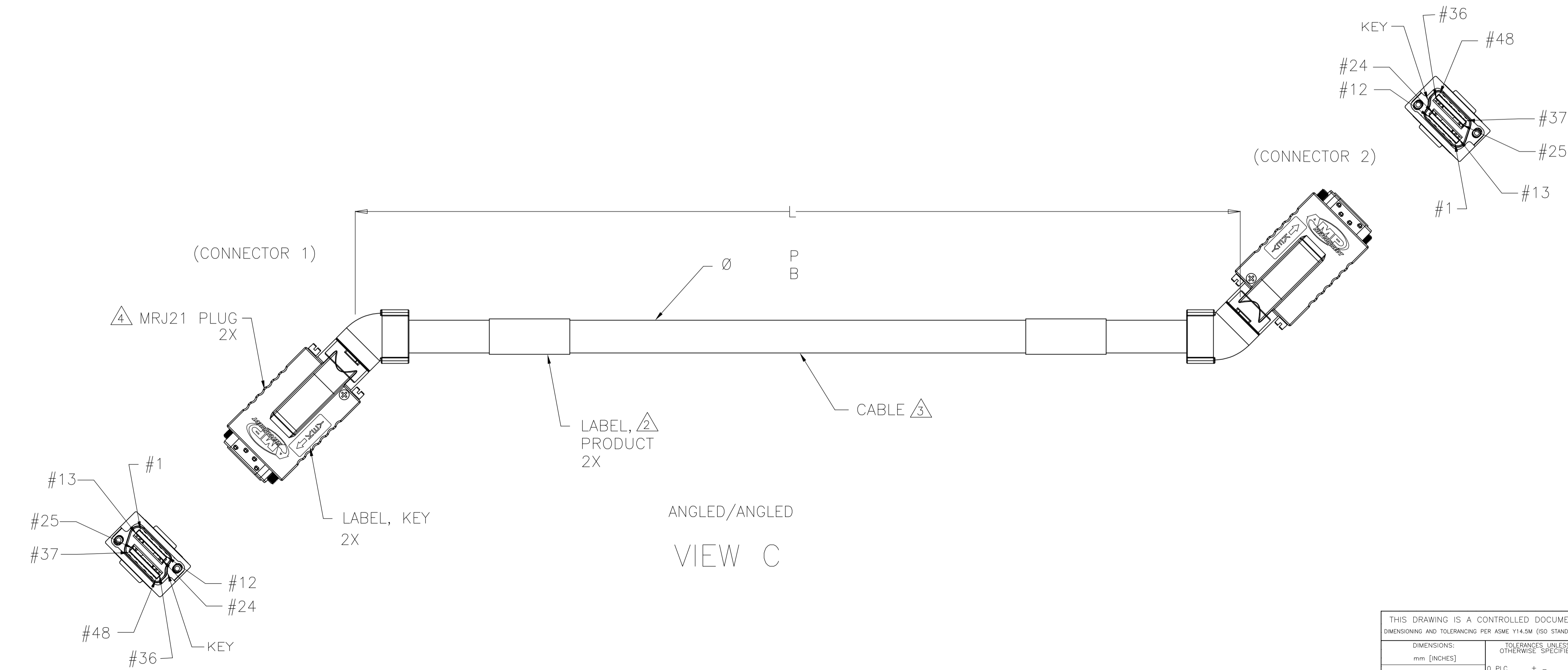
WIRE PATTERN AND LABEL INFORMATION FOR ASSEMBLY TYPES:
 MRJ21-TO-MRJ21
 MRJ21-TO-RJ45 HYDRA 6 LEG
 MRJ21-TO-RJ45 HYDRA 12 LEG

DETAIL V

THIS DRAWING IS A CONTROLLED DOCUMENT. DIMENSIONING AND TOLERANCING PER ASME Y14.5M (ISO STANDARDS)		DIN L HALL 01FEB2012	TE Connectivity
TOLERANCES UNLESS OTHERWISE SPECIFIED:		CHK S. JONES 06FEB2012	
DIMENSIONS: mm [INCHES]	0. PLC ± -	APVD S. JONES 06FEB2012	NAME
	1. PLC ± -	CABLE ASSEMBLY, MRJ21, 1 GbE, ENTERPRISE NETWORKS	
	2. PLC ± -	PRODUCT SPEC 408-10469	
	3. PLC ± -	APPLICATION SPEC	
	4. PLC ± -		
MATERIAL	FINISH	WEIGHT	SIZE CAGE CODE DRAWING NO. RESTRICTED TO
			A1 00779 C=2111439
CUSTOMER DRAWING		SCALE NTS	SHEET 2 OF 5 REV C

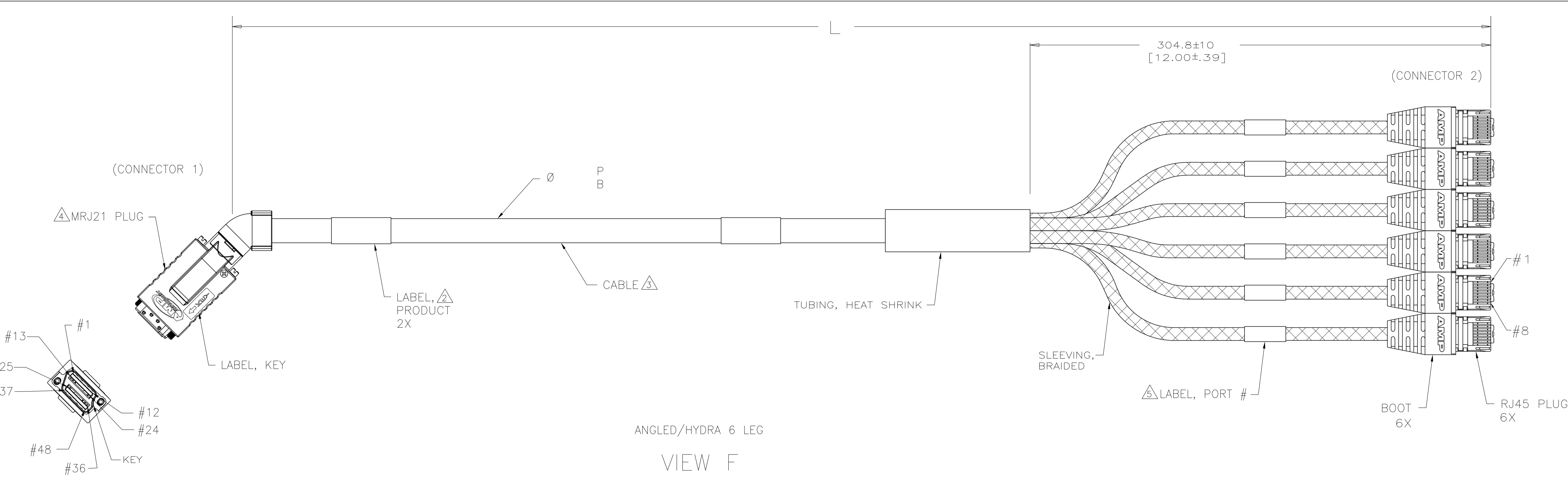
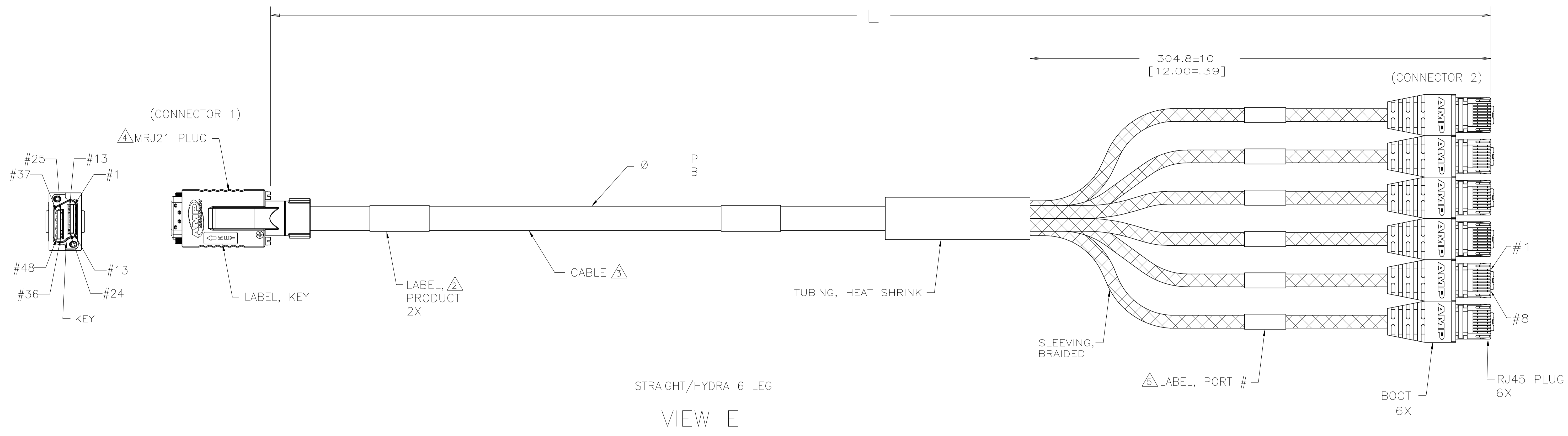


STRAIGHT/ANGLED
VIEW B

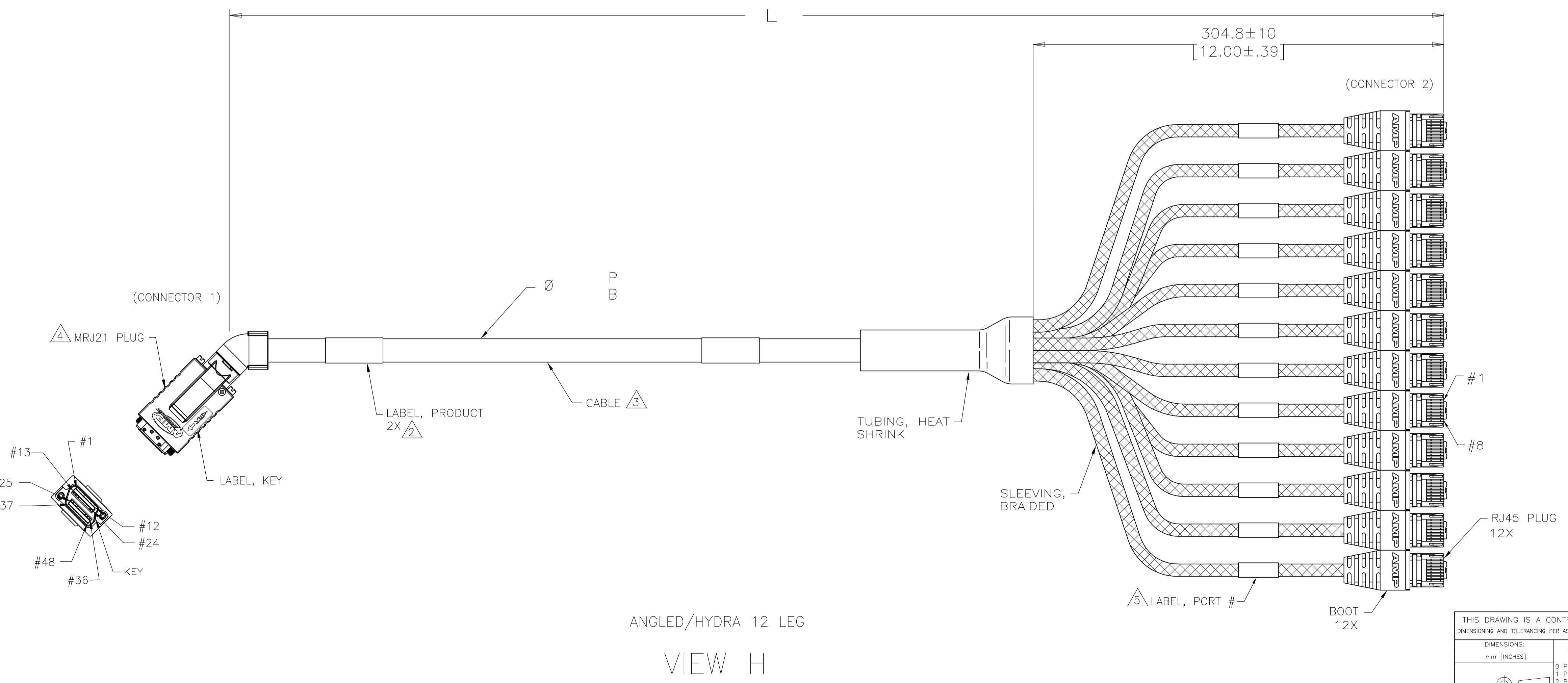
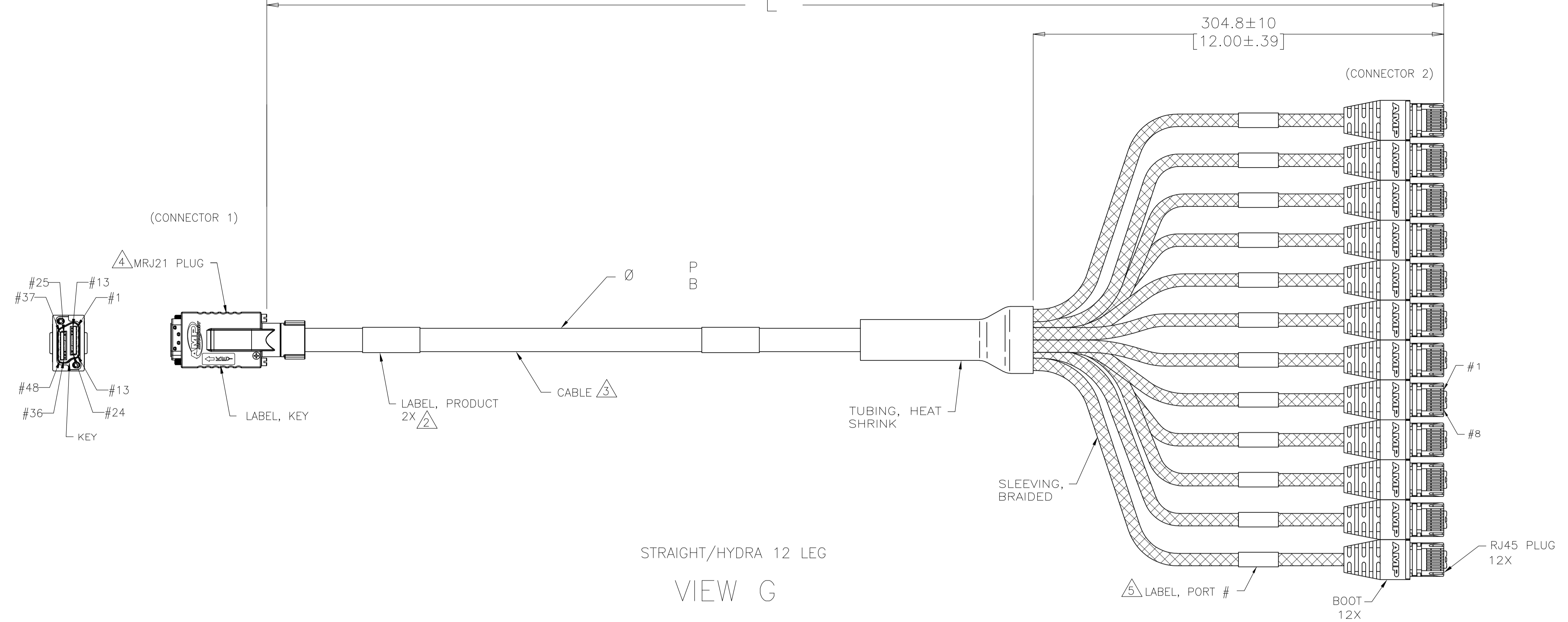


ANGLED/ANGLED
VIEW C

THIS DRAWING IS A CONTROLLED DOCUMENT. DIMENSIONING AND TOLERANCING PER ASME Y14.5M (ISO STANDARDS)		DIN L. HALL 01FEB2012	TE Connectivity
DIMENSIONS: mm [INCHES]		CHK S. JONES 06FEB2012	
TOLERANCES UNLESS OTHERWISE SPECIFIED:		APVD S. JONES 06FEB2012	NAME
0. PLC ± -	1. PLC ± -	PRODUCT SPEC	CABLE ASSEMBLY, MRJ21, 1 GbE, ENTERPRISE NETWORKS
2. PLC ± -	3. PLC ± -	APPLICATION SPEC	408-10469
4. PLC ± -	ANGLES ± -	SIZE	A1
MATERIAL	FINISH	WEIGHT	00779 C=2111439
		CUSTOMER DRAWING	SCALE NTS SHEET 3 OF 5 REV C



THIS DRAWING IS A CONTROLLED DOCUMENT. DIMENSIONING AND TOLERANCING PER ASME Y14.5M (ISO STANDARDS).		DIN	L. HALL	01FEB2012	TE Connectivity
TOLERANCES UNLESS OTHERWISE SPECIFIED:		CHK	S. JONES	06FEB2012	
DIMENSIONS:	0. PLC ± .	APVD	S. JONES	06FEB2012	NAME
mm [INCHES]	1. PLC ± .	PRODUCT SPEC		CABLE ASSEMBLY, MRJ21, 1 GbE, ENTERPRISE NETWORKS	
	2. PLC ± .	APPLICATION SPEC		408-10469	
	3. PLC ± .	SIZE	CAGE CODE	DRAWING NO.	RESTRICTED TO
	4. PLC ± .	WEIGHT	A1	00779	©=2111439
	ANGLES ± .	CUSTOMER DRAWING		SCALE	NTS
MATERIAL	FINISH	SHEET		4	5
		REV		C	



THIS DRAWING IS A CONTROLLED DOCUMENT. DIMENSIONING AND TOLERANCING PER ASME Y14.5M (ISO STANDARDS)		DIN L HALL 01FEB2012	TE Connectivity
TOLERANCES UNLESS OTHERWISE SPECIFIED:		CHK S. JONES 06FEB2012	
DIMENSIONS: mm [INCHES]	0. PLC ± .15	APVD S. JONES 06FEB2012	NAME
1. PLC ± .10	2. PLC ± .05	PRODUCT SPEC	CABLE ASSEMBLY, MRJ21, 1 GbE, ENTERPRISE NETWORKS
3. PLC ± .05	4. PLC ± .02	APPLICATION SPEC	408-10469
ANGLES ± .5°		SIZE	A1
MATERIAL	FINISH	WEIGHT	CAGE CODE DRAWING NO. RESTRICTED TO
		00779	2111439
		CUSTOMER DRAWING	SCALE NTS SHEET 5 OF 5 REV C